

CROWN

SP 1500 SERIES



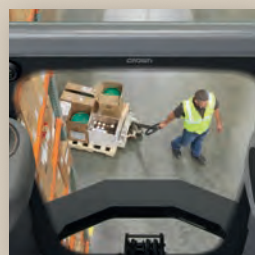
Perfecting the process

Operators of man-up order pickers are multitaskers who, in addition to picking product, must control their lift trucks efficiently and effectively in high-density working environments.

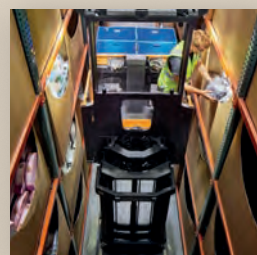
The Crown SP 1500 Series is designed so it can be adapted to best fit each operator's preferences and the kind of work they do. By enhancing operator efficiency and optimising lift-truck performance, the SP 1500 Series' ease of use improves the whole orderpicking process.

SP 1500 Series high-level order pickers offer sustained performance thanks to:

- An all-around visibility advantage.
- Industry-leading speeds combined with an intuitive blending of truck functions, helping to increase productivity.
- An operator-centric compartment that acts as a truly functional workstation throughout each shift.
- Confidence-boosting safety features.
- A comprehensive approach to truck uptime, including an advanced user interface and improved serviceability features.



Visibility



Performance



Operator Focus



Safety



Uptime



All-around visibility advantage

Visibility is the foundation of safety and productivity. The Crown SP 1500 Series provides operators with unparalleled views, both on the ground and in the air.

This all-around visibility helps enhance operational safety, improve productivity, and boost operator confidence.

CLEAR-VIEW TRAVEL

Visibility starts with the combination of a Crown-designed platform and clear-view mast. When the platform is elevated, the large upper window provides a wide-angle view of pedestrians, objects and other equipment.

When the platform is elevated and travelling in a power-unit-first direction, the industry-exclusive mid window – centred between the truck's controls – provides operators with unobstructed views of the floor below.

The auxiliary mast model features standard windows that provide open views when the truck is travelling with elevated forks in the forks-first direction.



CLEAR-VIEW BELOW

Openings in the middle and on each side of the floorboard allow operators working at height to see the outriggers and the area beneath the platform. This view boosts operators' confidence and helps them complete their tasks more efficiently.



CLEAR-VIEW ABOVE

The optional large panoramic window above the operator offers a clear view of pick locations and overhead obstructions.



Performance in motion

The SP 1500 Series takes order-picking productivity to the next level by focusing on the combined performance of operator and lift truck during picking tasks.

In the order-picking process, efficiency is critical. The SP 1500 Series offers exceptional stability at height, as well as outstanding lift/lower and travel speeds, plus integrated safety technology. These features enable operators to complete their tasks quickly and confidently. The spacious operator compartment allows operators a wide range of movement with access to a broad pick face, supporting the smooth movement of product to lift truck.



Extended access to the pick face helps operators move product with ease, focusing less on positioning the truck and more on their picking task.








TRACTION CONTROL

The OnTrac anti-slip traction control system helps optimise truck performance in wet, slick or dusty conditions. It monitors the rotational speed of the drive tyre, enhancing traction by responding immediately to slippage.

Leading Truck Performance

The SP 1500 Series delivers impressive lift, lower and travel performance to help you exceed your throughput goals.

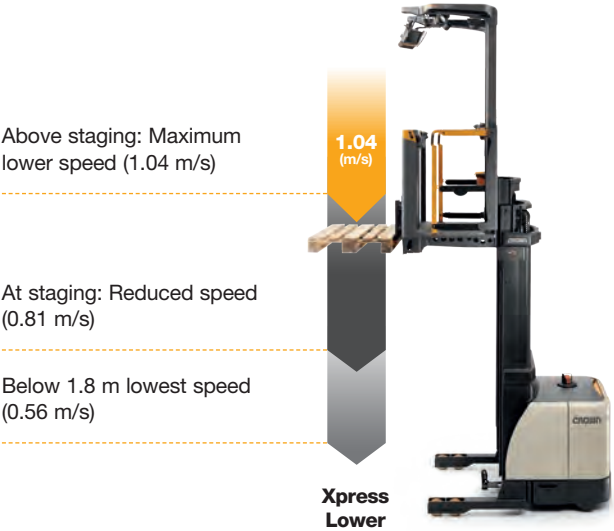
			24v	48v
	Travel Speed (PUF)*	m/s	12.0	12.0
	Lift Speed	m/s	0.36	0.56
	High-Speed Lift**	m/s	n/a	0.71
	Lower Speed (Loaded/Empty)	m/s	0.41	0.41
	Xpress Lower** (Up to 680 kg)	m/s	0.56	1.04

*PUF (Power Unit First)

**Optional feature

Xpress Lower Advantage

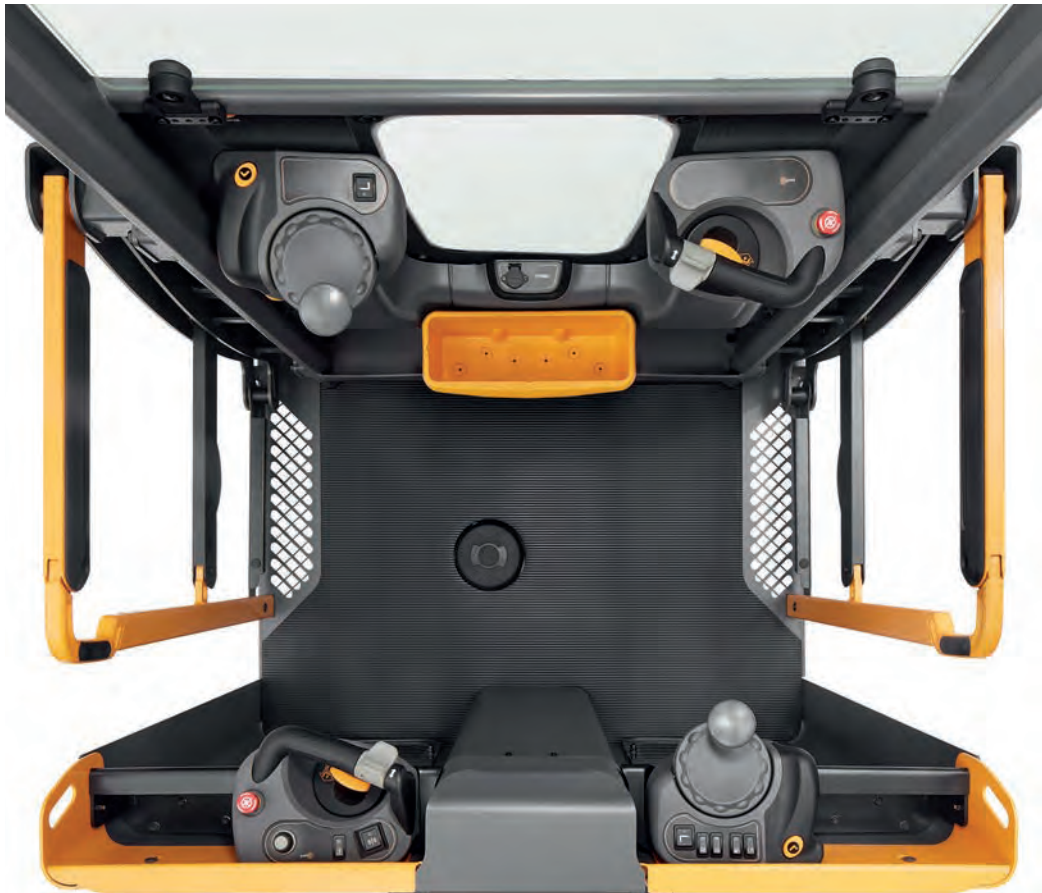
Reduce pick cycle times with faster standard lift speeds and more than 2x quicker lowering speed with optional **Xpress Lower** – an industry exclusive.



Operator-focused environment



To boost operational efficiency, the adaptive operator compartment in the SP 1500 Series – known as the Op-Zone – can be optimised to meet individual operator preferences and application requirements.



Left-hand control

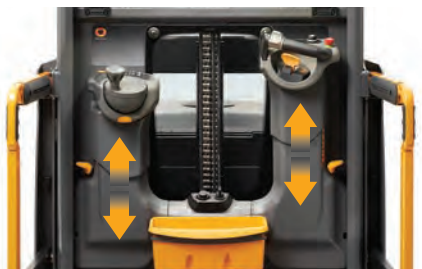


Vertical Horizontal

The left-hand, dual-position tiller knob accommodates operator preferences and operational needs. The side grip provides a stable, fixed point of contact.

Adjustable controls

Optional, independently adjustable control sets provide extra flexibility and comfort for operators of varying heights.



Right-hand control



The right-hand control set allows the operator to effortlessly blend truck functions while maintaining four stable points of contact. The optional display navigation knob offers another method of onscreen navigation.

Dual controls

Two sets of controls – one facing the power unit, the other facing the forks – provide the flexibility needed to change frequently between power-unit-first or forks-first travel.

Floorboard

Cushioned floorboards keep operators more comfortable during long hours on the truck. Side gates are positioned at the outermost edges of the platform, allowing operators to use the whole platform space.

Customised compartment

Work Assist

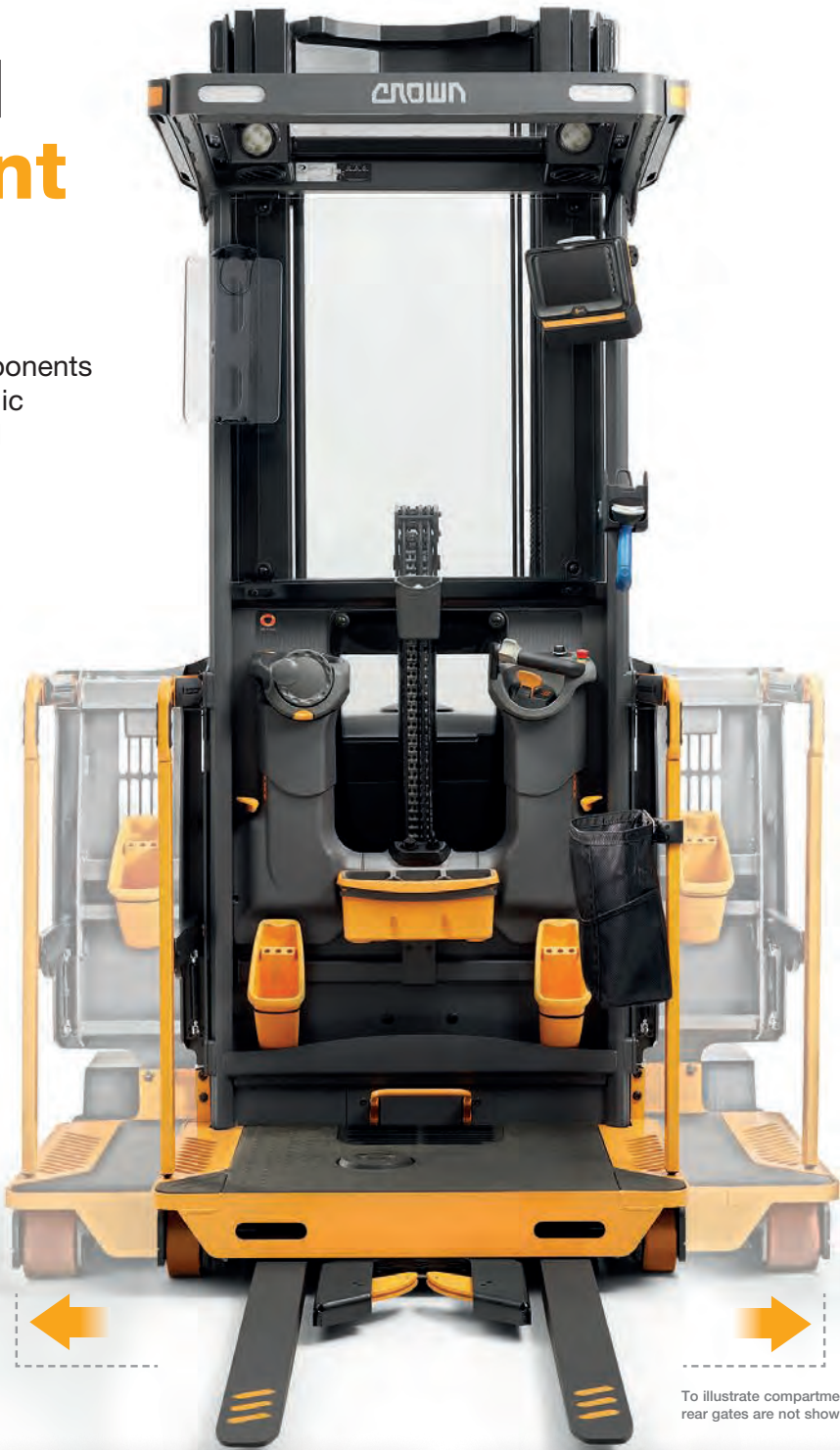
Integrated, flexible Work Assist components support a variety of tasks in a dynamic order-picking environment. Individual components can be configured for convenient storage, paper handling and more.

With multiple mounting locations, Work Assist options can be positioned for optimal operator reach and usability. Designed to withstand everyday use, they keep the operator space organised.

- Tools/personal storage
- Trash holders
- Device holders
- Paper storage
- Power options

Additional space

Wider platform sizes offer additional mounting points for Work Assist components.



To illustrate compartment interior, rear gates are not shown

Storage convenience



Paper handling



Storage + paper handling



Operator-focused experience

Your operators deserve a personalised lift-truck experience that enhances their daily work while keeping them informed of lift-truck status.

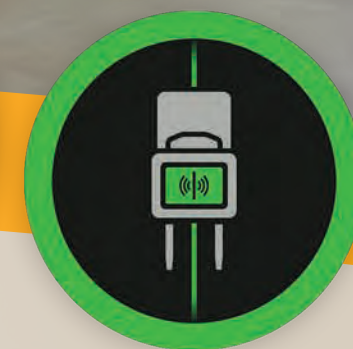
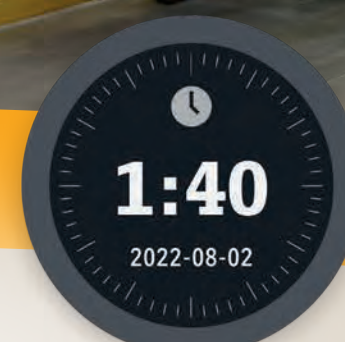
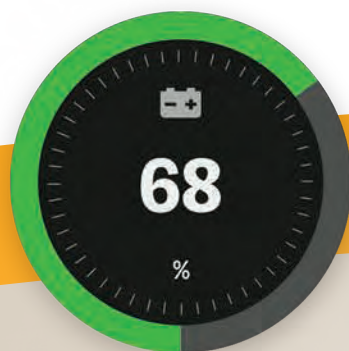
Our comprehensive Gena operating system plays a major role in Crown's operator-centric approach, providing users with an intuitive, data-rich experience. Its 7" touchscreen includes widgets displaying key operating metrics – such as battery capacity, hour meter, height indicator and steer angle indicator – at a glance. As a result, operators enjoy a better day-to-day user experience, including:

- Simplified user onboarding, with prompts on safe operating practices.
- Real-time lift truck feedback relevant to the task in hand.
- More than 40 languages available to accommodate a diverse workforce.
- Customisable display which operators can tailor to their tasks.



Intelligence. Built in

The intuitive Gena operating system optimises truck performance while providing users with real-time, actionable data.



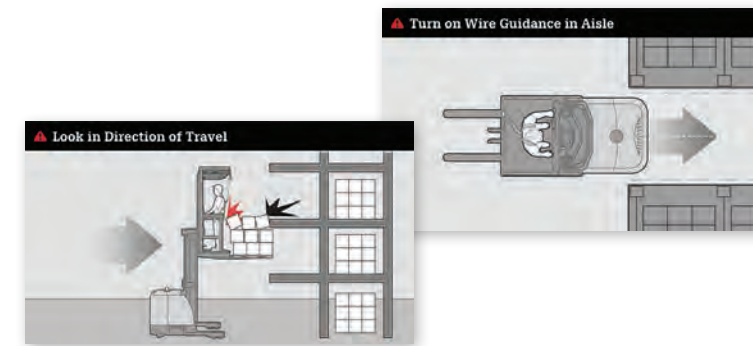
Safety focus builds confidence

Order picking is a physically demanding job that requires concentration on the task at hand.

To help keep safety top of mind, the Gena operating system in the SP 1500 Series provides contextual guidance, helps increase operator awareness, and creates a safe and productive working environment.

Safety reminders

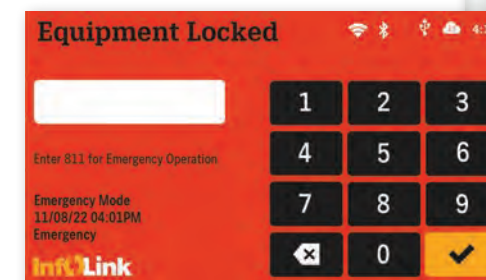
Upon login, the SP 1500 Series displays safety messages with visuals and text to remind operators of their training.



Simplified InfoLink integration

The Gena operating system in the SP 1500 Series is designed to integrate easily with Crown's InfoLink operator and fleet management system.* This system provides real-time and historical operational data that reveals areas of risk and identifies areas of opportunity. InfoLink features that help encourage safe operating behaviour include:

- Access control.
- Visual inspection checklist.
- Impact detection and alerts.
- Equipment lockout.



*Requires InfoLink

Stability stance

When the truck is travelling, a stable stance is critical regardless of the operator platform's position – at ground level or nine metres in the air. On the Crown SP 1500 Series, operators have four points of contact with the lift truck, including:

- Both feet on the floor in a comfortable position.
- One hand firmly gripping the steering tiller.
- The other hand on the fixed control handle.

Smarter system, longer uptime

High-level order pickers are major investments in your operation's productivity. Optimised uptime and performance are critical. That's why Crown offers a combination of advanced technology and energy solutions to deliver the serviceability and reliability required for success.

Service simplicity

Wireless software downloads keep trucks updated without taxing technicians.

Easy-to-adjust settings and return-to-factory defaults save time for technicians.

Analyser allows technicians to select individual system components and view all associated inputs and outputs.

Step-by-step calibration instructions with visuals improve technicians' efficiency and consistency.

Easy-access covers, panels and skirt doors can be quickly opened or removed for inspection and service.

Separate electronic and hydraulic systems keep oil and heat away from electronics for improved long-term reliability.



V-Force Lithium-Ion

Lithium-ion technology is revolutionising the electric forklift industry by delivering game-changing advantages.



Power up from a single source

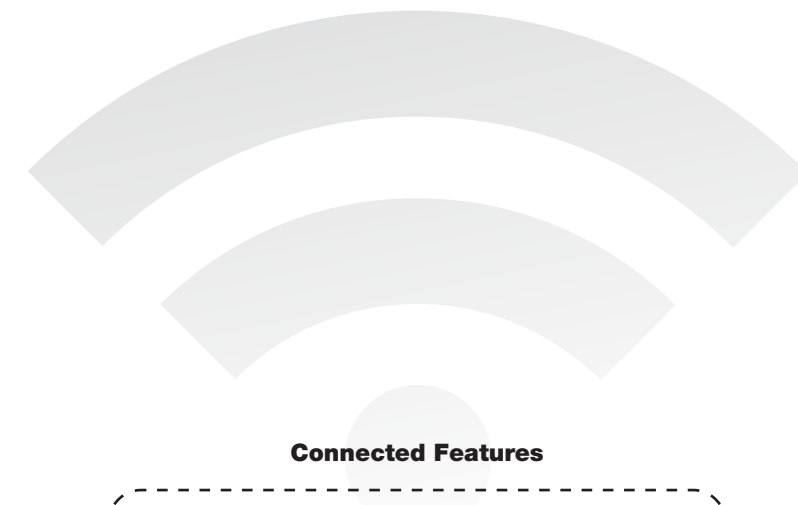
From our expertise in power management to our complete line of V-Force energy solutions, Crown uses a systemic approach to provide everything you need to power your forklift fleet. Adding up to more value for your business.

- Onsite evaluations
- Fleet and battery management
- Integrated solutions
- Complete support
- Batteries, chargers and accessories

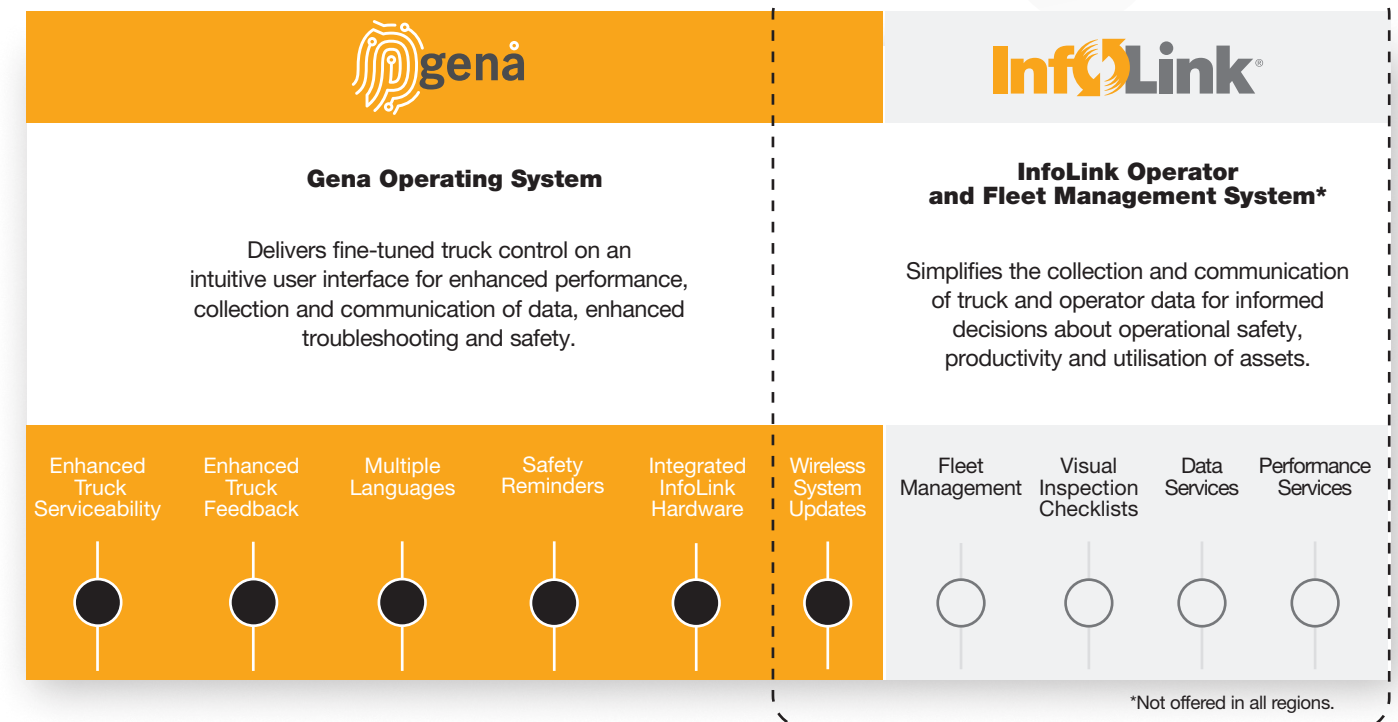
Connect to achieve more

Crown's connected solutions provide real-time, actionable data to stakeholders charged with achieving and maintaining gains in productivity, safety and utilisation.

Thanks to the Gena operating system, the SP 1500 Series comes with connected features as standard, plus options for additional features through Crown's InfoLink operator and fleet management system.



Connected Features



Crown's proven support network

Crown's extensive service network of technicians, supported by high parts availability, can provide the maintenance and training you need to fully leverage your investment.



Safety and training

Our comprehensive training programmes for operators, supervisors and technicians – and even pedestrians – can help support your efforts to provide a safe, productive working environment. Offered locally, our Demonstrated Performance (DP) TrainSafe Train-the-Trainer programme can provide your organisation with tools for training new operators efficiently using your own resources. DP Service Technician Training goes above and beyond traditional classroom training, allowing participants to work on lift trucks under instructors' supervision.



Forklift maintenance and repair

Crown's Integrity Service System keeps your forklifts running – regardless of brand. From time and material through to complete maintenance, our Integrity Service System offers a variety of service plans to suit your needs in efficient, cost-effective ways. Our well-stocked, GPS-dispatched service vans help ensure your service technician arrives with the right part at the right time.



crown.com

You can count on Crown to sell lift trucks designed for safe operation, but that's only part of the safety equation. Crown encourages safe operating practices through ongoing operator training, safety-focused supervision, maintenance and a safe working environment. Go to crown.com and view our safety section to learn more.

Because Crown is continually improving its products, specifications are subject to change without notice.

Crown lift trucks with Gena operating systems are connected products. Please see crown.com for the data use policy to learn more.

Crown, the Crown logo, the color beige, Gena, the Gena logo, Op Zone, the Op Zone logo, InfoLink, the Momentum Mark, OnTrac, Xpress Lower, V-Force and the ecologic logo are trademarks of Crown Equipment Corporation in the United States and other countries.

Copyright 2023-2025 Crown Equipment Corporation
SP 1500 BROCH GB 02/25, 10 – M01233-006-00



Clean Environment. Smart Business.

Printed on elemental chlorine free and sustainably forested paper.