

CROWN

TC 3000 SERIES



Engineered for performance

**When your material flow depends on a tow truck,
choose the reliable and durable TC 3000 Series –
designed from the ground up to deliver consistent performance.**

**The TC 3000 Series features Crown's
exclusive Access 1 2 3[®] Comprehensive
System Control and e-GEN[®] Braking
System, which enhance safe performance,
productivity and long-term value.**

The TC 3000 Series also features a robust,
reliable design, driven by real-world application
needs. Like all Crown products, it is proven
through extensive and rigorous testing on
individual components and entire truck
systems, both in the lab and in the warehouse.



Access123[®]
Comprehensive System Control



**Crown's exclusive
Access 1 2 3 Compre-
hensive System Control**
provides smooth, safe
operational control and
industry-leading diagnostics.
The system continuously
analyses factors that can
influence performance and
safety, such as operator
position, travel speed and
steering angle, responding

with optimised performance
as conditions change. The
ramp control feature auto-
matically holds the truck on
an incline until the operator
initiates forward or reverse
travel. The information
display includes system
indicators, operational
warnings, programmable
performance settings and
system diagnostics.

The TC 3000 Series incorporates electric steering for effortless, predictable control. The award-winning X10® Handle places all truck functions at your fingertips in a design that minimises upper body fatigue. The suspended low-step floorboard reduces vibration and shock from floor joints and rough surfaces.



Crown's QuickPick® Remote order picking technology optimises the order picking process.

For high-density order picking and fulfillment applications, Crown's QuickPick Remote is an operator assist technology that simplifies workflow. Operators can advance the tow tractor to the optimal position with the simple press of a button.

- Save time
- Reduce risk
- Increase productivity

For customers anticipating future workflow automation needs, the TC 3000 Series can be ordered with a QuickPick Remote-ready option to ensure that the vehicle can be retrofitted at a later stage.



Choose your preferred battery solution.

The decision between lead-acid and lithium-ion batteries depends very much on your specific application, working shifts and break times, as well as your electrical and facility infrastructure. With the wide range of V-Force batteries and chargers, you will find the right technology solution for your operation.



A Crown Equipment Brand



The intelligent e-GEN® Braking System uses the powerful torque of the AC motor to provide consistent, reliable, long-term performance. This virtually maintenance-free, frictionless braking system eliminates adjustments, while reducing numerous parts, linkages and other wear points. An automatic parking brake is applied when the truck is stationary.

A wide selection of Work Assist accessories adds to the exceptional performance and productivity advantages of the TC 3000 Series.

Crown engineers analysed the complete range of transport and picking tasks and then designed Work Assist accessories which can be application-tailored to enhance convenience, comfort, safety and productivity.



Front Work Assist accessory tube with cable management, load tray and universal magnetic storage compartment

Studies prove that productivity and accuracy dramatically increase when tools and materials are organised for the task.

The TC 3000 Series offers the innovative and easily tailored Work Assist accessories to solve all of these workplace challenges. Work Assist accessories such as storage pockets, clip pads, trash bag holder or beverage holder are easy to attach and combine. The accessory can be attached due to the universal mounting system on the Work Assist accessory tube, which is available with and without cable management. You can also add front and rear load trays, stretch foil holder, scan gun holders and data monitors.

With Crown's Work Assist accessories you can create the perfect mobile work station for your application.



Front Work Assist accessory tube with cable management, large transparent clip pad and scan gun holder

Rear Work Assist accessory tube with small clip pad, scan gun holder and universal holder featuring an adjustable swivel arm for WMS monitors



Additional rear storage compartment



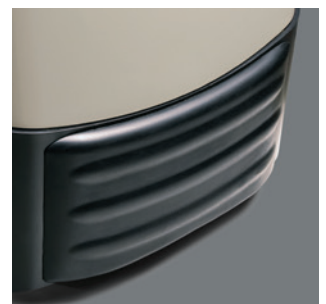
Adjustable lean seat



Front Work Assist accessory tube with cable management



Hitch Position Control



Front bumper



Crown Gabelstapler GmbH & Co. KG

Philipp-Hauck-Str. 12
85622 Feldkirchen, Germany

Tel +49 89 93002-0

Fax +49 89 93002-133

crown.com

Because Crown is continually improving its products, specifications are subject to change without notice.

Crown, the Crown logo, the colour beige, the Momentum symbol, X10, The X10 Handle, the stylised X10 logo, Access 1 2 3, e-Gen, Pick Position Control, InfoPoint, Work Assist and ecologic are trademarks of Crown Equipment Corporation in the United States and other countries.

Copyright 2007-2022 Crown Equipment Corporation
TC 3000 BROCH GB 01/2023, 10 – M01356-006-05
Printed in Germany

ecologic

Clean Environment. Smart Business.

Printed on elemental chlorine
free and
sustainably forested paper.