

CROWN

# WJ 50 SERIES





# Compact and durable Built to last

The WJ 50 Series is the most compact powered pedestrian pallet truck available from Crown. It is designed to help today's diverse workforce handle heavy loads in tight spaces with minimal effort. The WJ 50 Series is built to last, backed with an exclusive 3-2-1 warranty that ensures durability and long-term performance.

## WJ 50 Series

- **Capacities:**  
1,200 kg  
1,500 kg
- **Turning radius:**  
From 1,071 mm
- **System voltage:**  
48 V



## Big performance In a small footprint

Compact design makes the WJ 50 Series the right-sized solution for light-duty applications.



## Robust performance guaranteed

The sturdy WJ 50 Series is backed by a comprehensive industry-leading warranty.



**3-2-1 WARRANTY**

# Designed to excel In light-duty applications

The WJ 50 Series is designed for performance and operator convenience in many applications where space is limited and efficient load handling is essential.

## Transport and logistics — Curbside delivery

With an incredibly short head length and an industry-leading turning radius, the WJ 50 Series is ready to handle loads within the tight confines of a lorry or a lift gate with precise pallet positioning. Standard castor wheels provide added stability.



## Retail trade — Replenishment

In retail environments, a small footprint and travel speed up to 5 km/h help operators quickly and efficiently complete replenishment tasks with only minor disruption to customers and staff. Convenient charging means the WJ 50 Series is ready for work.



## Wholesale trade — Load handling

Whether order picking or transporting in the warehouse, the WJ 50 Series offers robust 48 V power and electric lifting and lowering that helps reduce fatigue and increase operator productivity.





# Powerful performance In a compact package

With the powered WJ 50 Series compact pallet truck, operators experience ease of travel without the physical stress of moving heavy loads. With the shortest head length in the industry, the WJ 50 Series provides the tightest turning radius of any powered pallet truck, enabling operators to quickly and efficiently move heavy loads in tight spaces.

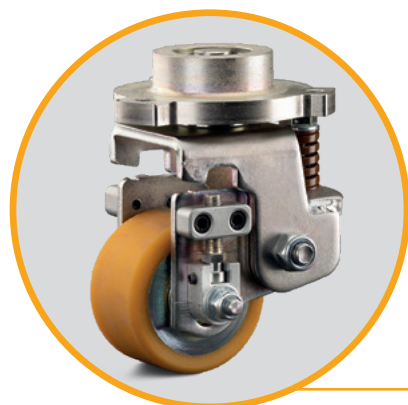
## Ergonomic control handle

The ergonomic control handle features large lift and lower buttons accessible from both sides. It enhances the operator experience by enabling operators to blend multiple functions regardless of the direction of travel.



## Stabilising castor wheels

Standard spring-loaded and adjustable castor wheels provide additional load stability, especially on uneven surfaces like those encountered during curbside delivery, preventing the pallet truck and the load from excessive rocking.

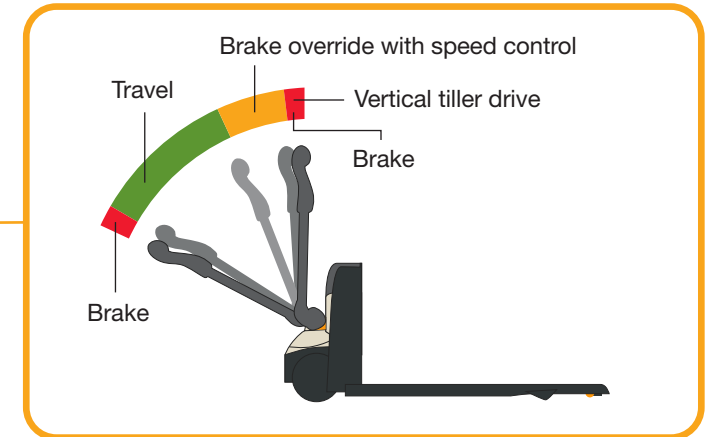


## Built-in access control

The control handle can be configured with an embedded keypad, card reader or key switch.

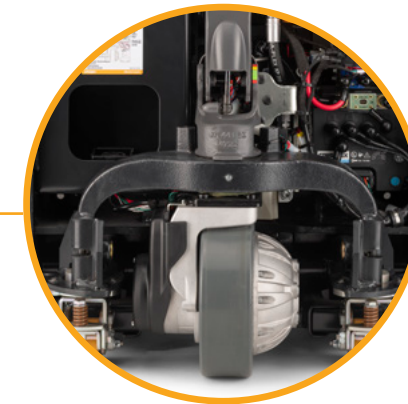
## Precise pallet positioning

Position speed control enables operators to use the control handle in a near vertical position while engaging traction control at creep speed. With the control handle completely upright, the vertical tiller drive allows for fine-tuned pallet positioning.



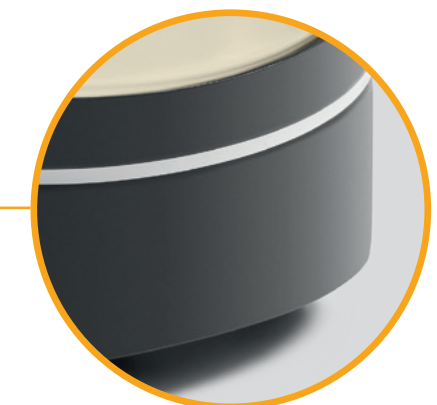
## Power and energy efficiency

A potent 48 V electrical system and drive unit provide the power to move heavy loads while delivering industry-leading energy efficiency — up to 39% lower energy consumption than the competition.



## Closed-design protective skirt

A protective power unit cover and lower skirt defend against damage to internal components.





# Lasting durability For long service life

The WJ 50 Series features a robust steel frame and solid steel covers, creating a solid foundation and exceptional component protection. That's durable quality that provides consistent performance day after day. The chassis and forks are backed by a three-year warranty.

The location of the riser axles and steel rollers help prevent damage from constant contact with dock boards, pallets and uneven warehouse floors.

Durable and long-lasting standard castor wheels are adjustable and spring-loaded.

A massive main linkage system helps ensure the forks carry the load equally to prevent twisting.

Strong, reinforced high-strength steel forks provide durability for heavy loads.

## Steel covers

Provide improved durability and protection for internal components. Easy disassembly allows for quick access when needed.



# Compact convenience For ease of use

The WJ 50 Series utilises Crown's V-Force lithium-ion batteries and multiple convenient charging options to ensure it is ready to work when you are. Its small footprint and ease of operation accommodates a changing workforce that depends on its powerful performance to maintain and even improve productivity.

## Battery management system

A residual runtime indicator on the battery display shows the remaining runtime in hours and minutes, and it adapts to various duty cycles using a learning algorithm.

## Power system flexibility

A single battery compartment accommodates 48 V lithium-ion batteries ranging from 9.8 Ah to 24.5 Ah capacities, so available power can be matched to the application and desired runtime.



## One-handed battery swap

Plug and unplug the battery using an easy one-handed operation. An automatic locking mechanism ensures the battery remains seated and connected when operating on uneven surfaces.



# Application versatility

## Flexible battery and charging options

Four different V-Force lithium-ion batteries help meet the requirements of a wide range of applications with just one pallet truck, for added flexibility.

Chargers include two onboard options that conveniently plug into a standard wall outlet, plus an external charging base that can be floor, shelf or wall mounted. Charging bases can be mounted together to create floor or shelf-mounted compact charging stations for multiple swappable batteries.

Adaptive charging ensures that any available battery can be used with any WJ Series charger.



## Adapt to fit the application

Crown's Work Assist accessories are designed to make the operator's job faster, easier and more productive.

- Foil holder
- Small A5 clipboard
- Soft bag with magnets and strap
- Integrated storage pocket with on-board charger
- Universal storage
- Scan-gun holder
- Storage pocket
- Load backrest

# CROWN

[crown.com](https://crown.com)

Because Crown is continually improving its products, specifications are subject to change without notice.

Notice: Not all products and product features are available in all countries in which this literature is published.

Crown, the Crown logo, the colour beige, V-Force and the Momentum symbol are trademarks of Crown Equipment Corporation in the United States and other countries.

© 2025 Crown Equipment Corporation  
SF21083-300 05-25