

**CROWN**

# TC 3000 SERIES



# Engineered for performance.

**When your material flow depends on a tow truck, there is no better choice than the reliable and durable TC 3000 Series – designed from the ground up to deliver consistent performance.**

**The TC 3000 Series features Crown's exclusive Access 1 2 3<sup>®</sup> Comprehensive System Control and e-GEN™ Braking System, which enhance safe performance, productivity and long-term value.**

The TC 3000 Series also features a robust, reliable design, driven by real-world application needs. Like all Crown products, it is proven through extensive and rigorous testing on individual components and entire truck systems, both in the lab and in the warehouse.



**Access123<sup>®</sup>**  
Comprehensive System Control

**Crown's exclusive Access 1 2 3 Comprehensive System Control** provides smooth, safe operational control and industry-leading diagnostics. The system continuously analyses factors that can influence performance and safety, such as operator position, travel speed and steering angle, responding with

optimised performance as conditions change. The ramp control feature automatically holds the truck on an incline until the operator initiates forward or reverse travel. The information display includes system indicators, operational warnings, programmable performance settings and system diagnostics.

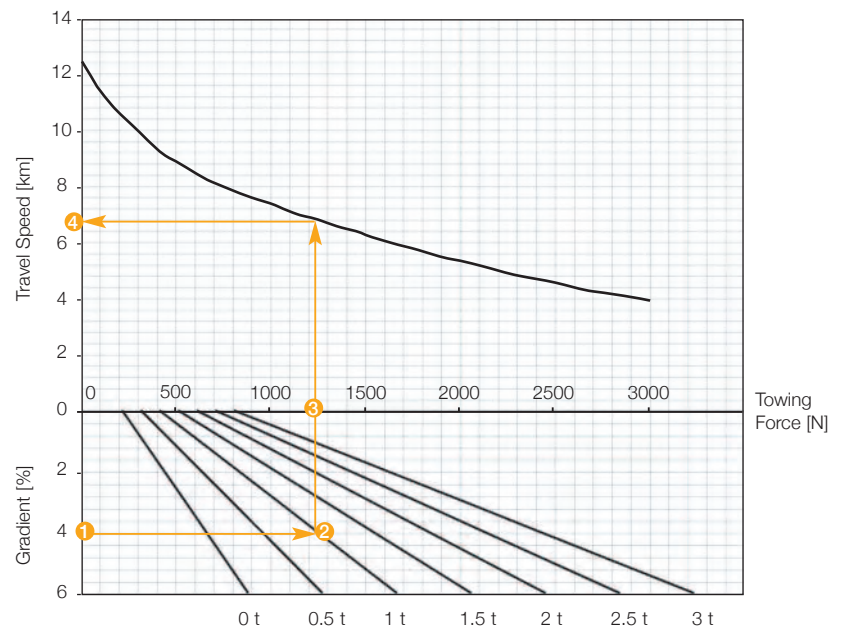
**The TC 3000 incorporates electronic steering for effortless, predictable control.** The award-winning X10® control handle places all truck functions at your fingertips in a design that minimises upper body fatigue. The suspended low-step floorboard reduces vibration and shock from floor joints and rough surfaces.



**The intelligent e-GEN Braking System** uses the powerful torque of the AC motor to provide consistent, reliable, long-term performance. This virtually maintenance-free, frictionless braking system eliminates adjustments, while reducing numerous parts, linkages and other wear points. An automatic parking brake is applied when the truck is stationary.



**Gradeability diagram TC 3000**



- The example shows that at a gradient of 4% <sup>1</sup> with a load of 1 ton <sup>2</sup> the TC 3000 has to apply 1250 N <sup>3</sup> towing force and will achieve a travel speed of 6.8 km/h. <sup>4</sup>
- Maximum continuous towing force is 800 N.
- Trailers with a braking system are recommended for gradients more than 4 %.



**A wide selection of Work Assist™ accessories adds to the exceptional performance and productivity advantages of the TC 3000 Series.**

**Crown engineers analysed the complete range of transport and picking tasks and then designed Work Assist accessories which can be application-tailored to enhance convenience, comfort, safety and productivity.**



**Front tube with large see-through clip pad and scan gun holder**

**Studies prove that productivity and accuracy dramatically increase when tools and materials are organised for the task.**

Only the TC 3000 Series offers the innovative and easily tailored Work Assist accessories to solve all of these workplace challenges. The universal mounting system makes it easy to attach and combine items such as storage pockets, clip pads, trash bag holder or drink holder. You can also add front and rear load trays, stretch foil holder, scan gun holders and data monitors.



**Rear tube with small clip pad, scan gun holder and adjustable arm for WMS monitor**



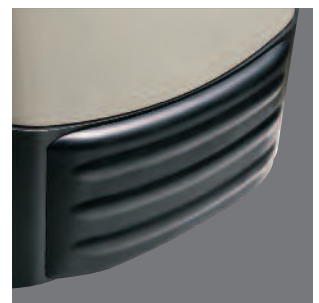
**Additional rear storage compartment**



**Adjustable lean seat**

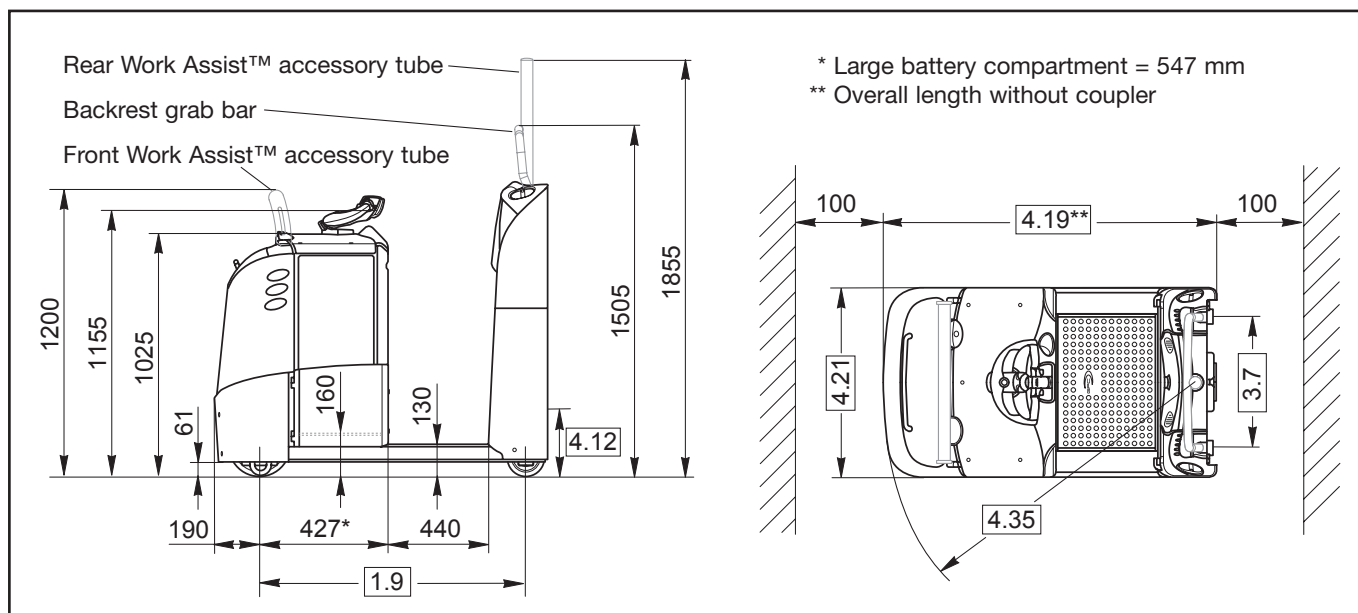


**Hitch Position Control™**



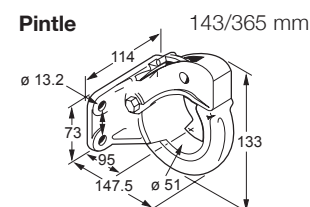
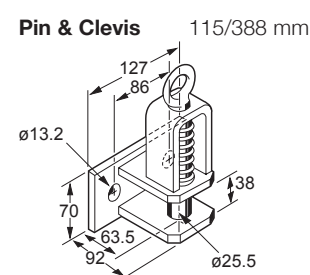
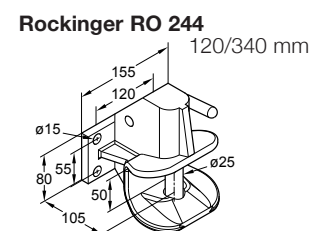
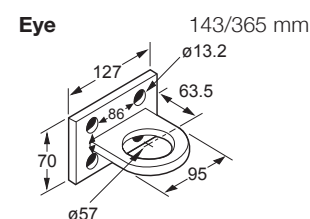
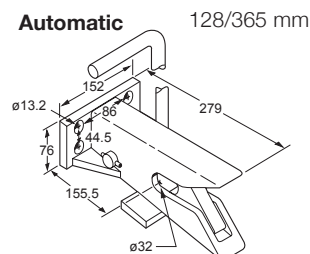
**Front bumper**

**With Crown's Work Assist™ accessories you can create the perfect mobile work station for your application.**



General Information	1.1	<b>Manufacturer</b>	Crown Equipment Corporation			
	1.2	<b>Model</b>	TC 3000-3.0			
	1.3	<b>Power</b>	electric			
	1.4	<b>Operator Type</b>	stand-on			
	1.5	<b>Load Capacity</b>	Q	kg	3000	
	1.7	<b>Rated Drawbar Pull</b>	F	N	800	
	1.9	<b>Wheel Base</b>	y	mm	1030	1150
Weights	2.1	<b>Weight</b>	less battery	kg	590	630
	2.2	<b>Axle Load</b>	without load, front / rear	kg	595 / 380	690 / 440
Tyres	3.1	<b>Tyre Type</b>	Vulkollan			
	3.2	<b>Wheel Size</b>	front	mm	Ø 250 x 75	
	3.3	<b>Wheel Size</b>	rear	mm	Ø 150 x 60	
	3.4	<b>Additional Wheels</b>	optional	mm	Ø 60 x 82	
	3.5	<b>Wheels</b>	number (x=driven) front/rear	1x / 2		
	3.6	<b>Track Width</b>	front	b10	mm	central position
	3.7	<b>Track Width</b>	rear	b11	mm	563
Dimensions	4.8	<b>Operator Stand Height</b>	h7	mm	130	
	4.9	<b>Tiller Arm Height</b>	h14	mm	1155	
	4.12	<b>Coupler Height</b>	h10	mm	see couplers	
	4.19	<b>Overall Length</b>	without coupler	l1	mm	1310   1430
	4.21	<b>Overall Width</b>		b1	mm	810
	4.32	<b>Ground Clearance</b>	centre wheelbase	m2	mm	61
	4.35	<b>Turning Radius</b>		Wa	mm	1220   1340
Performance	5.1	<b>Travel Speed</b>	w. / w.o. load	km/h	8.5 / 12.5	8.0 / 12.5
	5.6	<b>Max. Drawbar Pull</b>		N	3250	
	5.7	<b>Gradeability</b>		%	see diagram	
	5.10	<b>Service Brake</b>			electric	
Motors	6.1	<b>Traction Motor</b>	rating at S2 60 min.	kW	4.0	
	6.3	<b>Max. Battery Box Size</b>		lxwxh	mm	210x790x784   330x790x784
	6.4	<b>Battery Voltage</b>	nominal capacity K5	V/Ah	24/420,465	24/560,620
	6.5	<b>Battery Weight</b>		kg	367,383	489,509
	8.1	<b>Type Controller</b>	drive			transistor

**Coupler Heights min./max.**



Mounting plate allows all types of couplers to be adjusted in 45 mm increments (Rockinger RO 244 in 55 mm increments)

**Electric System / Batteries**

24-volt electrical system with nominal battery capacities from 420 Ah up to 620 Ah.

The battery can be removed vertically or horizontally with optional battery rollers for left/right or both sides removal.

**Standard Equipment**

- Maintenance free 3-phase (AC) traction and steering motors
- e-Gen® Braking System offers regenerative and frictionless electric braking (Mechanical braking applies only as parking brake)
- Electronic steering with the centre mounted X10® Handle for precise and effortless control
- The self-centering X10® Control Handle places all truck functions at the operator's fingertips
- Crown Access 1 2 3® Comprehensive System Control
- Intelligent Steering System slows the travel speed in curves
- Crown's Information Display
  - 1 line LCD display with 8 characters
  - Battery discharge indicator
  - Keyless start up with PIN code
  - Start up and run time diagnostics
  - 3 selectable traction performance profiles
  - Hour meters including traction motor and run time
  - Access 1 2 3 onboard diagnostic with real time troubleshooting capabilities
- CAN-Bus technology
- Ramp hold
- Low step height of 130 mm with a wide walk-through area
- Suspended floorboard with a non-slip anti-fatigue floor mat with integrated presence sensors
- Electric power disconnect plug
- Large storage compartments

- Large front storage tray
  - Large storage compartments in the backrest
  - 2 large storage bins in the backrest
- Vulkollan drive tyre and load wheels with additional rounded skid bars
  - Soft contoured backrest and cushioned soft kneepad
  - Battery connector DIN 160 A
  - Heavy duty power unit
    - 10 mm thick steel skirt
    - Easily removable reinforced steel covers
    - Top battery access

**Optional Equipment**

- Additional wheels Ø 60 x 82 mm instead of skid bars
- Backrest grab bar
- Adjustable fold-down lean seat
- Hitch Position Control™ in backrest
- Desktop work surface (with large battery compartment)
- Battery roll out for left / right or both sides
- SBE 160 red battery connector
- Power supply 12V for electronic tools
- Cold storage conditioning
- Front Work Assist™ accessory tube
- Rear Work Assist™ accessory tube
- Work Assist™ Accessories
  - Load tray
  - Foil roll holders
  - Storage pockets
  - Beverage holder
  - Trash bag holder
  - Scan gun holder
  - Small, medium and large clip boards
  - Mounting brackets for WMS terminals
- Rear storage compartment
- Audible travel alarm
- Flashing beacon
- Rubber bumper
- Key switch
- Key pad
- Special paint
- InfoLink® ready
- Supertrac drive tyre
- Lithium-Ion Battery Ready

**Electrical**

24 volt electrical system managed by Crown's Access 1 2 3 Comprehensive System Control. Virtually maintenance-free AC traction motor provides strong acceleration and control at any speed. Sensors monitor functional parameters including steering, speed and operator position and adjusts operational settings automatically to suit conditions.

**Power Unit**

The rugged power unit is designed for tough real-world applications. A 10 mm thick skirt protects drive unit and caster components while reinforced steel covers and doors cover all electronics. The uncluttered layout of components provides quick and easy access for servicing.

**Operator Area and Controls**

Soft and fully suspended floorboard reduces operator fatigue. Wide walk-through compartment with rounded surfaces provides a convenient shortcut even while carrying boxes. Contoured lean pad helps the operator stay centred in the truck while providing a soft contact surface to lean against. Multiple storage pockets provide locations for tools and personal effects.

All truck functions are controlled by the award-winning X10 control handle that allows simultaneous operation of all functions with one hand. Electronic steering is standard, providing precise, predictable control.

A large information display provides battery discharge level, operational status and service messages to the operator.

**Access 1 2 3® Comprehensive System Control**

Crown's Access 1 2 3 technology provides optimum performance and control by offering a commu-

nications interface for the operator and service engineer, intelligent coordination of truck systems and simplified service with advanced diagnostics.

The display includes a full featured on-board service tool so service engineers can actively view inputs and outputs during truck operation. No laptop or service terminal is required.

Performance tuning can be accessed at the display to customise truck performance for specific applications or operator requirements.

**e-GEN® Braking System**

The power of the high-torque AC traction motor is used to stop the truck and keep it static until a travel input is requested, even when operating on a gradient. This system eliminates adjustments and wear points for a lifetime of maintenance free use. An automatic parking brake activates if the truck is stopped and the operator leaves the platform or power is disconnected.

**Work Assist™ Accessories**

A comprehensive range of Work Assist accessories are available to support every kind of picking and administrative task. These rugged tools can be easily combined and positioned in the location best suited to the application and the user. Customer accessories can also be added using the universal clamp and adapter plate.

**Safety Regulations**

Conforms to European safety standards. Dimensions and performance data given may vary due to manufacturing tolerances. Performance is based on an average size vehicle and is affected by weight, condition of truck, how it is equipped and the conditions of the operating area. Crown products and specifications are subject to change without notice.

**Crown Gabelstapler GmbH & Co. KG**

Philipp-Hauck-Str. 12  
85622 Feldkirchen, Germany  
**Tel** +49(0)89-93002-0  
**Fax** +49(0)89-93002-133  
**crown.com**

Because Crown is continually improving its products, specifications are subject to change without notice.

Crown, the colour beige, the Momentum symbol, X10, The X10 Handle, the stylised X10 logo, Access 1 2 3®, e-Gen, Hitch Position Control, InfoPoint and Work Assist are trademarks of Crown Equipment Corporation.

Copyright 2007 Crown Equipment Corporation  
TC 3000 BROCH GB 08/15, 10 – M01356-006-03  
Printed in Germany

Clean Environment. Smart Business.

Printed on elemental chlorine free and sustainably forested paper.

twitter.com/crown\_europe\_en

news.crown.com/uk/feed/