

CROWN

# PC 4500 SERIES



# Smart move



**When you choose Crown PC 4500 Series center control pallet trucks, it's a smart move for your warehouse operation.**

Consider how your best operators move with a rhythm, maneuvering trucks around the warehouse and finessing their pallet loads. You'll appreciate how the PC 4500 Series works with the operator – during order picking, in transport or on the dock. Operators experience easier handling through electronic power steering on and off the truck,

along with all-around maneuverability and workflow improvements. Crown's intuitive design gives operators efficiency in motion, contributing to their productivity.



Electronic power steering allows the operator to work in a comfortable side stance position for entering pallets or maneuvering in congested spaces. Work Assist options such as the second level pick steps, beverage holder and battery mounted storage module contribute to operator efficiency and productivity.

# Maneuver Easily

**Ever watch an operator put everything he has into maneuvering a center control pallet truck?**

The Crown PC 4500 Series gives you simplified handling and precise control with electronic power steering. Experience a simpler, more intelligent way to move.



**Crown's innovative electronic power steering is a huge advantage on the PC 4500 Series center control pallet truck.**

Operators gain the flexibility to use side stance or forward-facing positions for the task at hand. It reduces fatigue by eliminating the twisting and leaning required to operate manual-steer center control pallet trucks.

**Steering simplicity is further enhanced by the X10 Handle.** It features controls ergonomically designed and positioned for easy access during steering maneuvers. Operators can simultaneously control travel, lift and horn functions. You'll immediately notice how much easier operators maneuver—in and out of pallets and around your facility.

**Thanks to Crown's electronic power steering, and the intelligence of Access 1 2 3 technology, the PC 4500 Series helps operators maneuver and finesse even the heaviest rated loads with ease.**

On the PC 4500 Series, Access 1 2 3 technology continuously monitors operator inputs and adjusts traction and steering performance, as well as varying handle steer effort through the tactile feedback device, to deliver safe, controlled performance.

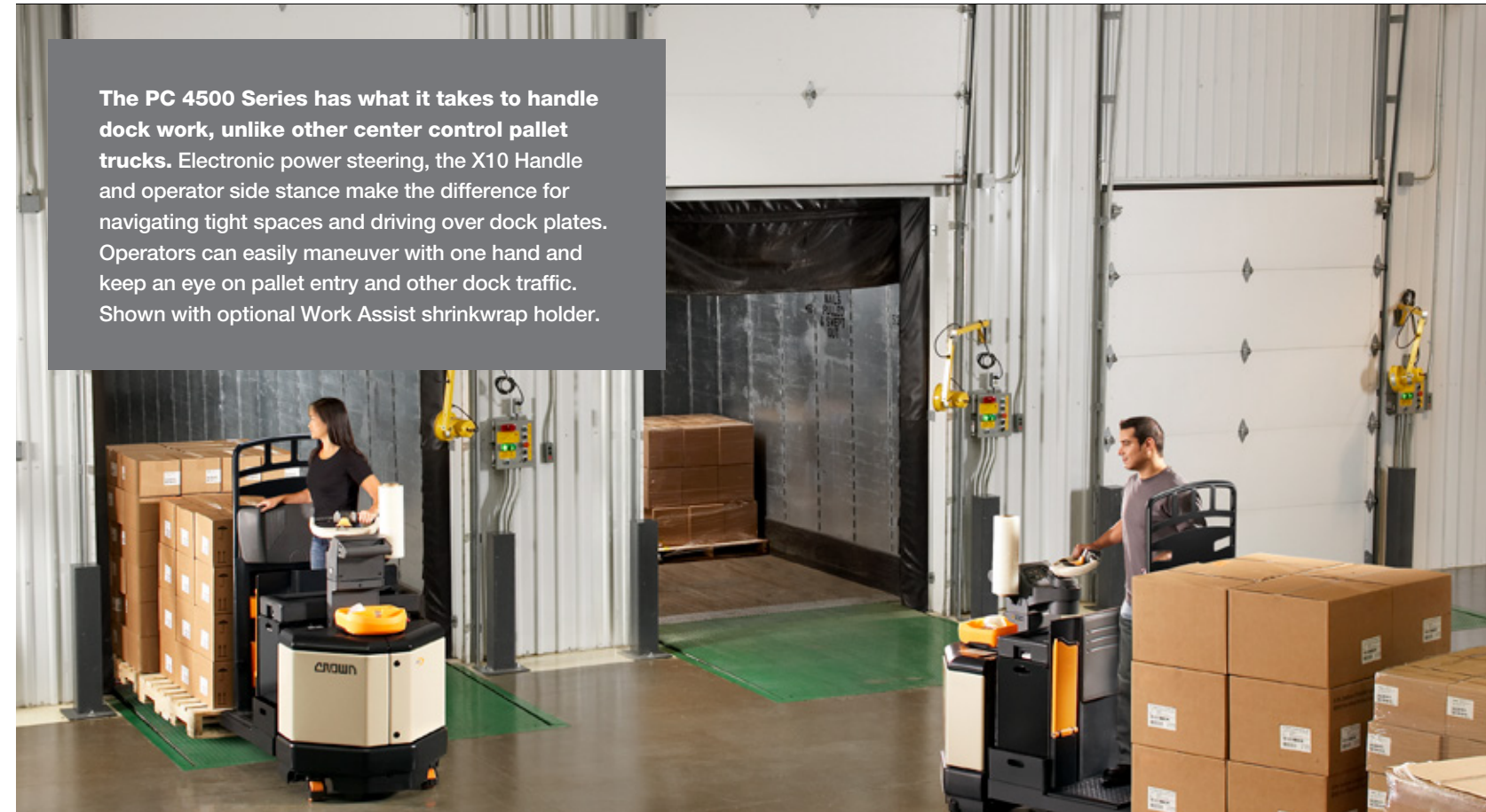
Consider how Crown's integrated systems approach to steering benefits operators:

- Operator stability and control are enhanced at higher speeds.
- Steer effort is reduced when maneuvering in tight, congested spaces.
- Operator and load stability are enhanced because speed is automatically reduced during turns.
- Load stability is improved by managing acceleration under varying conditions.

These real-time feedback and intelligent control features of Crown center control pallet trucks work to increase operator confidence during high- and low-speed maneuvering.

Operators also benefit from the way the PC 4500 Series contributes to operator stability and reduced fatigue which leads to increased comfort and productivity.

**The PC 4500 Series has what it takes to handle dock work, unlike other center control pallet trucks.** Electronic power steering, the X10 Handle and operator side stance make the difference for navigating tight spaces and driving over dock plates. Operators can easily maneuver with one hand and keep an eye on pallet entry and other dock traffic. Shown with optional Work Assist shrinkwrap holder.

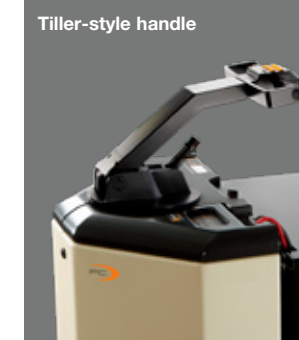


**The X10 Handle features a travel speed switch to choose between two operating modes.** Placing the switch in the rabbit mode (🐰) allows high speed travel and a steer angle of 60 degrees each way of center to meet typical application requirements. For extremely congested areas, placing the switch in the turtle/rabbit mode (🐢/🐰) reduces travel speed and increases the steer angle to 90 degrees each way of center for safe, controlled maneuvering.



**Optional raise/lower/horn buttons** in the load backrest.

**Optional manual steering is available** on the PC 4500 Series, with a choice of two handle designs.



# Pick Efficiently

When it comes to low-level order picking, customers tell us small improvements in the picking process contribute to big operational gains. So, whether you choose the standard PC 4500 model or enhance it with the QuickPick operator assist technology, you'll benefit from features that save time and effort.

**It's a fact:** in typical picking cycles, up to **75 percent** of tasks take place off the truck. As much as **45 percent** of these tasks involve walking.

Given this fact, one of the main goals of the PC 4500 is to reduce operator efforts on and off the truck.

**Electronic power steering** with the X10 Handle ensures easy steering and intelligent control, on and off the truck. During walk-along tasks, the PC 4500 Series automatically limits steering angles to plus or minus 15 degrees.

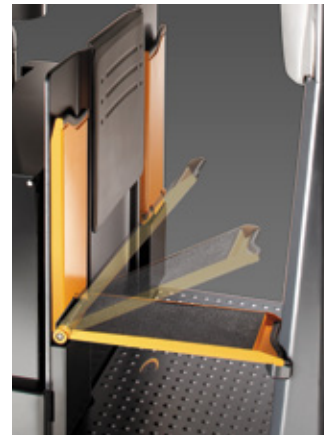
**Load backrest** edges are contoured to provide smoother entry/exit. Optional Work Assist accessories keep necessary tools close at hand.

Operators also appreciate how the platform stops at a **consistent step height** with each lift, which greatly enhances operator productivity.

In addition, Crown's **wide platform and easy walk-through** design allows operators to walk through the compartment, not around it, cutting the number of steps in half. This walk path reduction means less picking time, less material carrying time and less operator fatigue.

An **operator-sensing floorboard** further improves walk-through by eliminating a raised high-speed pedal.

**Postural relief** is another advantage of the floorboard, which features a premium floor mat as standard. The floorboard provides greater flexibility for body positioning, including the use of side stance which contributes to operator comfort and productivity when working in the forks-first direction.

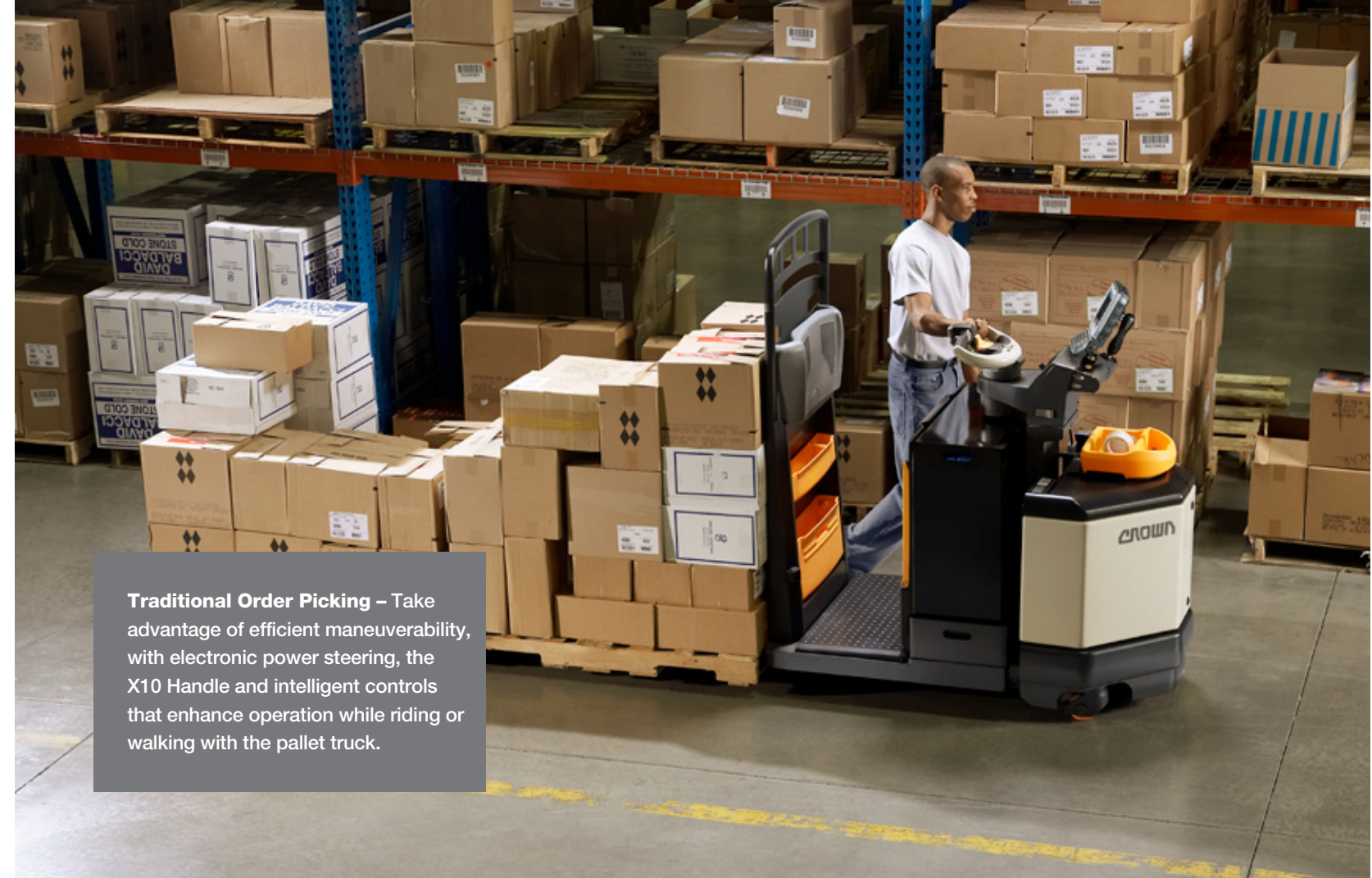


According to Crown's research, the optional **second-level pick step for the PC 4500 Series can double the number of picks that can be easily reached by the operator.** The fold-down design gives operators quick and secure footing, extending the comfortable picking zone as much as two feet.

**A wide platform,** contoured load backrest edges and low step height simplify on-off truck tasks and enhance walk-through.



The platform on the PC 4500 Series stops at a preset height every time the forks are raised to provide a consistent step height for operators.



**Traditional Order Picking** – Take advantage of efficient maneuverability, with electronic power steering, the X10 Handle and intelligent controls that enhance operation while riding or walking with the pallet truck.



## QuickPick Operator Assist

Crown's exclusive QuickPick operator assist technology **revolutionizes workflow** in order picking by enabling the operator to remotely advance the lift truck. Hassle-free, easy to use QuickPick systems dramatically improve the picking process and significantly reduce cost and operator fatigue. **The QuickPick system:**

- Increases operator **PRODUCTIVITY**.
- Promotes **SAFETY**.
- Helps reduce **DAMAGE** to product, racking and trucks.
- Lessens **OPERATOR FATIGUE**.

# Think Tough

Look underneath a pallet truck, and you'll uncover the truth on durability. Crown engineered each part to withstand tough applications to ensure longevity. That explains why Crown provides a five-year guarantee on the power unit and fork weldment.



**The Crown engineered and manufactured drive unit**—which is the industry's largest—provides a level of durability that competitors cannot match. It's the result of a carefully integrated design that features:

- Top and bottom mounting
- Crown-manufactured AC drive motor
- Horizontally mounted motor (simplifies maintenance)
- Large spur gears
- Splined axle shaft
- A drive tire supported on both sides.



Competitor Crown

**A 13-inch drive tire** ensures a smoother ride and sure handling of heavy loads, easily outperforming the competitor's 10-inch tires.

**Crown's load wheel expertise** helps provide excellent load wheel performance and extends load wheel life by integrating all critical components such as compounds, hubs, bearings and axles.

**The lift linkage system** features massive steel construction throughout, including a large and heavy tension bar to withstand greater impacts.

**The large tapered roller bearing** on the top of the drive unit withstands vertical and horizontal forces, while the bottom mounting features four shock-mounted rollers in a hardened steel roller race.

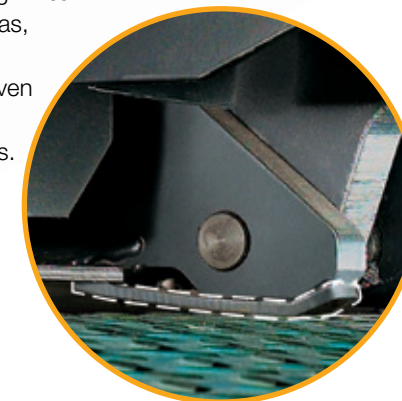
**The Crown power unit frame** is specially engineered to provide stability and added strength at high stress points. It's an obvious differentiator between Crown and any competitor.

**A stabilizing torsion bar** (optional with manual steer) enhances performance by reducing truck and load sway generally associated with tall and heavy loads.

**Wear plates** are constructed of hardened steel so strong that it's used on bulldozer blade tips. This provides additional strength and protection in high wear and impact areas, especially those affected by uneven floor surfaces and dock plates.

**The fork assembly** is one-piece heavy-gauge steel formed for increased strength and designed to handle heavy loads for years. Additional steel structures are placed in critical stress areas under the fork, preventing premature fatigue.

**The quick adjust casters** enable fast, easy adjustment to compensate for normal drive tire wear. Simply loosen the lock nut and adjust the caster height with an Allen wrench.



# Invest Wisely



**Crown's exclusive Access 1 2 3 Comprehensive System Control enables safe, reliable lift truck performance and diagnostics through an intuitive method of communication.**

**The PC 4500 Series delivers excellent performance and energy efficiency, improved uptime and substantial cost savings. So you can invest wisely today in solutions that meet tomorrow's challenges.**

Excellent performance at a low cost of ownership is the commitment you can expect from Crown. It's why we design, engineer and manufacture up to 85 percent of the components in each Crown lift truck. This vertical integration allows us to carefully control the quality of each component and to incorporate innovative technologies into every truck. On the PC 4500 Series, it's evident in systems engineering that combines the benefits of Crown's AC motor, Access 1 2 3 Comprehensive System Control and e-GEN Braking System.

**The e-GEN Braking System**, for example, uses the powerful torque of Crown's AC motor to deliver consistently reliable frictionless braking for the life of the truck. Operators also benefit from a parking brake that applies automatically. You gain all of these performance advantages along with substantially reduced maintenance costs.



**Crown's Access 1 2 3 technology gives you another unique advantage** because it continuously monitors and controls key lift truck components and considers changing conditions to enhance system performance. In addition, Access 1 2 3 technology offers the highest level of programmability to select the right balance of energy efficiency and performance to achieve your desired goals. As a result, your business benefits from a clear, consistent approach that ensures excellent performance and reliability, one proven to save time and reduce costs.

With **Access 1 2 3 technology**, the PC 4500 Series provides consistent performance and the same advanced diagnostics proven across Crown's product family. Crown's advanced diagnostics enables faster, simpler and higher quality service.

In addition, the **InfoPoint System complements Access 1 2 3 technology** by further simplifying service by following a logical, easy-to-understand troubleshooting process. Key components of the system include on-truck component maps and information nuggets located throughout the truck. They're designed to give technicians the three W's about a problem:

- What it is
- Where it is
- What it does.

As a result, technicians can quickly and accurately resolve any issues without schematics, wiring diagrams or service manuals on most repairs.



Crown's InfoLink operator and fleet management system provides new insight into the performance and utilization of connected equipment, people and processes.



Crown's exclusive **guarantee and industry-leading warranties** give you additional assurance of exceptional, reliable performance without having to purchase extended warranties. These demonstrate Crown's commitment to long-term value and a low cost of ownership.

**You'll also want to consider the value of Crown's complete system of support.**

Crown's Integrity Parts and Service System gives you a proven way to reduce labor and parts replacement costs. It's the result of Crown's extensively tested components and systems, combined with a responsive and qualified dealer network. In addition, your system of support includes flexible maintenance programs with customized plans and innovative fleet management solutions such as InfoLink and FleetSTATS. Superior performance. Reliable service. Flexible solutions. Everything comes together for a wise investment.

## Compare for yourself. No one else goes this far.

### Warranties

<b>Access 1 2 3 Control System</b>	<b>3 years</b>
<b>e-Gen Braking System</b>	<b>2 years</b>

### Guarantee

<b>Power Unit &amp; Fork Weldment</b>	<b>5 years</b>
---------------------------------------	----------------



**For decades, Crown has been focused on sustainability**—from eco-friendly materials and manufacturing processes to the innovative design and long-term durability of our trucks. Crown is committed to protecting the environment

and delivering productive material handling solutions to our customers, including refurbished components and lift trucks. Crown believes a clean environment is smart business.

**Make a smart move with the PC 4500 Series. It's your sustainable advantage.**

**ecologic**

Clean Environment, Smart Business.

Printed on elemental chlorine free and sustainably forested paper.

**CROWN**

**You can count on Crown to build lift trucks designed for safe operation, but that's only part of the safety equation. Crown encourages safe operating practices through ongoing operator training, safety-focused supervision, maintenance and a safe working environment. Go to [crown.com](http://crown.com) and view our safety section to learn more.**

**Crown Equipment Corporation**  
New Bremen, Ohio 45869 USA  
**Tel** 419-629-2311  
**Fax** 419-629-3796  
[crown.com](http://crown.com)

Because Crown is continually improving its products, specifications are subject to change without notice.

Crown, the Crown logo, the color beige, the Momentum Mark, X10 Handle, Access 123, Work Assist, QuickPick, e-Gen, InfoPoint, InfoLink, FleetSTATS and Integrity Parts Service System, the ecologic logo are trademarks of Crown Equipment Corporation in the United States and other countries.

Copyright 2019-2022 Crown Equipment Corporation  
SF18003 Rev. 12-22  
Printed in U.S.A.